



Maryland Counseling Association

A BRANCH OF ACA

COMPASS POINTS

ISSUE 14 | VOLUME 1 | SUMMER 2021

Inside this Edition

Letters from Leadership	1
MCA/Division Events	2
MCA Leadership	4
Organizational Chart	6
MCA Membership	7
Newsletter Submissions	8

Mission

“SERVING THE COUNSELING,
GUIDANCE, AND HUMAN
DEVELOPMENT PROFESSIONS”

MCA Officers

President:
Sara Pula

President Elect:
Pat Dudley

Secretary:
Danielle LaSure Bryant

Treasurer:
Irene Burks

Immediate Past President:
Carol ZA McGinnis

Member-at-Large:
Cynthia Taylor

Executive Director:
Cathie Eaton



MCA is pleased to welcome incoming President, Dr. Sara Pula, and incoming Executive Director, Cathie Eaton!

Letter from the Executive Director

I am honored and humbled to be MCA’s current Executive Director. This is not a position I expected, nor one I aspired to so early in my career. I hope to continue to earn your trust to take care of our members, support our leaders – past and present, and to support the overall mission of MCA:

To promote public confidence and trust in the counseling profession, and to influence policies that affect professional counselors and the welfare of the diverse clients they serve. MCA supports professional counselors and counselors-in-training through a variety of professional development opportunities and support services.

I first heard about MCA from then-president Tony Spann, inviting students to join and present at the annual conference. I was a single mom completing my master’s program at Loyola University Maryland and, at the time, I couldn’t see value of attending a conference when my CEs wouldn’t count yet!

Fast forward to 2013 when I had lunch with a former professor who encouraged me to begin my professional development. I was taken aback--What do you mean? I already attended my first ACA Conference; so, wait, there’s MORE?? Yet working as an independent contractor and later as a sole practitioner, I missed the camaraderie of being in school, of having office mates to converse or consult on clients. Frankly, I was quite lonely. I attended my first MCA conference and slowly became involved with more leadership positions.

I learned the true value of MCA membership

and participation is more than getting your CEs at a conference---it is the mentoring, the friendships, and added professional connections for making ethical referrals for our clients. Even we introverts need some social interactions! I hope you will renew your membership with MCA and consider your own professional development to continue to grow in our organization.

I look forward to supporting our President, Dr. Sara Pula during our annual conference in Ellicott City October 15-16, 2021, and offering more social and training events, both online and in person throughout the year.

Please do not hesitate to contact me at Exec@MDCounseling.org for any questions, concerns, and I would be happy to set up a time to chat either by phone or Zoom.

With gratitude,

Catherine “Cathie” Eaton, LCPC, GCDF, NCC
[Executive Director, Maryland Counseling Association](http://www.MDCounseling.org)



Stronger Together: Rebuilding a Bright Future!



M Maryland

C Counseling

A Association

2021 Fall Hybrid Conference

October 15, 2021 (Virtual)

October 16, 2021 (In Person)

Call for proposals extended to August 20, 2021! Proposals can be for a live virtual day, in person day, or prerecorded session. Click [here](#) if interested.

MCA Emerging Leaders Program

The MCA Emerging Leaders Program was designed to provide graduate counseling students, new professionals, and experienced professionals with cultivating experiences that support leadership skills and competency development, and diverse opportunities to actively participate in MCA Executive Board meetings, serve on a committee, task force, and/or engage in projects of interest, receive mentorship, build professional networks, and gain exposure to the responsibilities associated with fulfilling elected leadership positions.

Emerging Leaders will receive complimentary registration to the 2021 MCA Annual Conference (\$250 value!), receive mentorship from a MCA

leader, meet and network with other emerging leaders in the program, and be recognized at the conference as an Emerging Leader. Recipients will also be recognized on MCA's website, be featured in the MCA newsletter *Compass Points*, and have the opportunity to bolster and expand resume content through the development of helpful videos and web information for counseling students throughout the State of Maryland.

Interested individuals can obtain more information and the application by clicking [here](#). If you have any questions, please contact Dr. Marja Humphrey at mhumphrey@bowiestate.edu.

Bi-Weekly Spirituality Peer Support Group for Helping Professionals



Marilyn

Maya



THIS OPEN GROUP...

... is sponsored by the Maryland Counseling Association (MCA) and Maryland's Association for Spiritual, Ethical, and Religious Values in Counseling (MASERVIC). Please join us. Bring your lunch/coffee.

WE CULTIVATE...

a supportive environment for graduate students and helping professionals.

FACILITATORS:



Marilyn Spenadel, LCPC, ACS
MASERVIC President-Elect
marilynspenadel@gmail.com
(240) 426-8344



Maya Georgieva, Ed. D, LCPC, ACS
MASERVIC President
maservic@MDCounseling.org

The Zoom link will be sent out by 11:59 pm, the day before each meeting.

Together we can thrive, collaborate with hope, and learn to accept uncertainty!



REGISTER AT [HTTPS://WWW.MDCOUNSELING.ORG/MASERVIC](https://www.md Counseling.org/maservic)



To register for MCA or any of our events, please go to www.mdcounseling.org

Find us on Facebook ([@mdcounseling](https://www.facebook.com/mdcounseling)) and Twitter ([@md_counseling](https://twitter.com/md_counseling))

Contact the MCA President for more information about committees and open board positions.

DIVISION PRESIDENTS

MACES President

Marybeth Heather

MACES@MDCounseling.org

MASERVIC President

Marilyn Spenadel

MASERVIC@MDCounseling.org

SAIGE-MD President

Call Trevenen

SAIGEMD@MDCounseling.org

MAMCD President

Ricardo Phipps

MAMCD@MDCounseling.org

MCDA President

Natasha Ortiz Fortier

MCDA@MDCounseling.org

LCPCM Liaison

Danielle LaSure-Bryant

LCPCM@MDCounseling.org

MAMCFC President

Deborah Allen

MAMCFC@MDCounseling.org

MCSJ President

Kizzy Pittrell

MCSJ@MDCounseling.org

MSCA Liaison

Open

MSCA@MDCounseling.org

COMMITTEE CHAIRS

Advocacy Chair

Roni White

advocacy@MDCounseling.org

Credentialing Chair

Maya Georgieva

credentialing@MDCounseling.org

Newsletter Chair

Michelle Schoonmaker

newsletter@MDCounseling.org

Archives Chair

Mala Hosmane

archives@MDCounseling.org

Emerging Leaders Chair

Marja Humphrey

elchair@MDCounseling.org

Program Planning Chairs

Cheryl Fisher

program@MDCounseling.org

Awards Chair

Glenda Dickonson

awards@MDCounseling.org

Human Rights Chair

Open

Humanrights@MDCounseling.org

Public Relations Chairs

Annyck Hamez

public.relations@MDCounseling.org

Bylaws Chair

Open

bylaws@MDCounseling.org

Membership Chairs

Atiya Smith

membership@MDCounseling.org

Registrar

Cathie Eaton

events@MDCounseling.org

Networking Chair

Marybeth Heather

networking@MDCounseling.org



Chesapeake Beach
PROFESSIONAL SEMINARS LLC

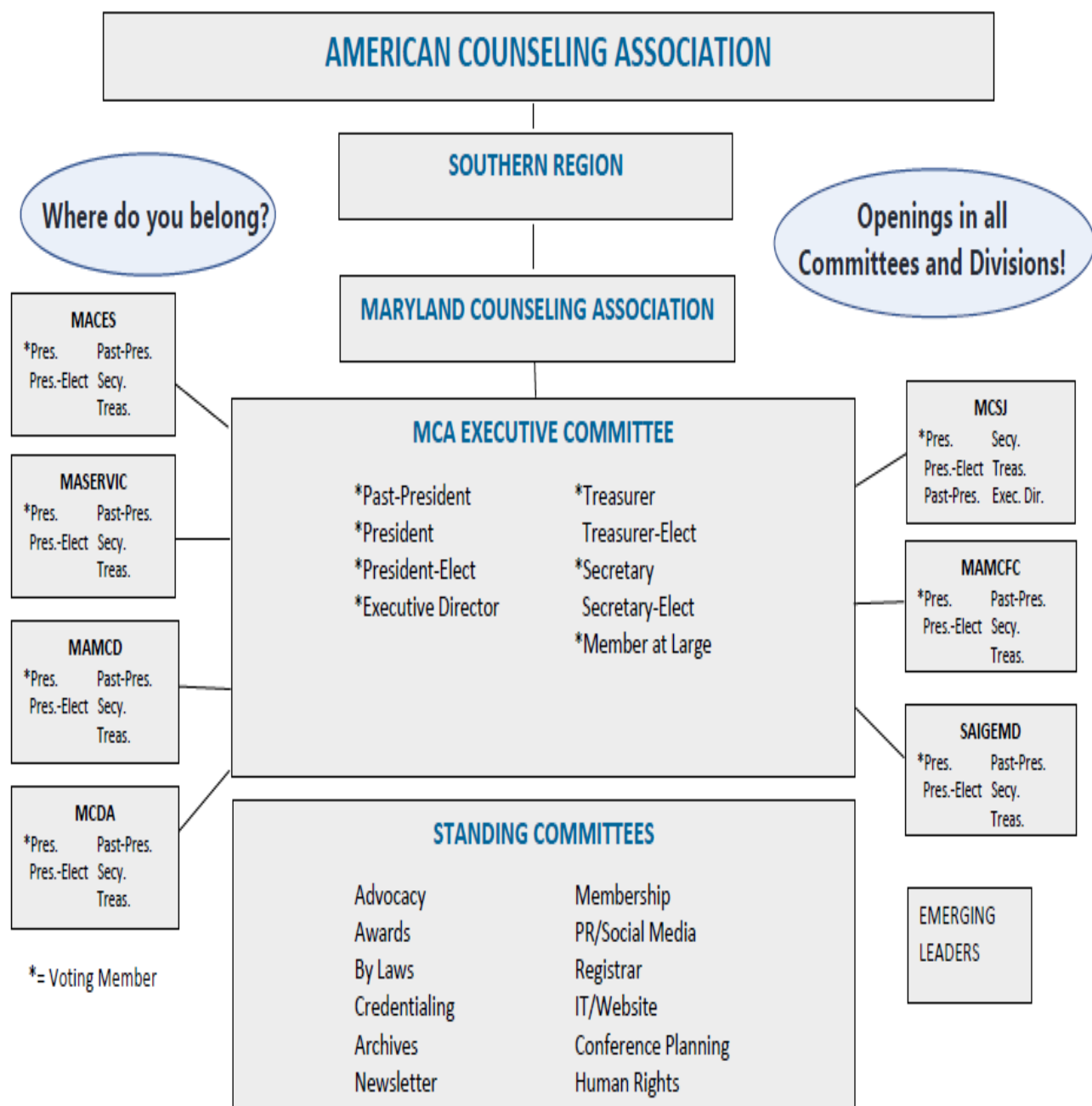
“

TRACK A

150 Hours of Play Therapy Training to Become a Registered Play Therapist!

Since 1998 the cost has been \$2600.00. We are now increasing the cost to \$2975.00. Cost increase will begin on August 15. Sign up NOW and SAVE \$375.00. The Association for Play Therapy is allowing virtual training as contact hours until December 31. Don't wait, begin your journey TODAY! For more information, please send e-mail with inquiries to cbps2006@gmail.com or text us at 240-535-1433.

”



MACES-Maryland Association of Counselor Education and Supervision
MASERVIC-Maryland Association for the Spiritual, Ethical and Religious Values in Counseling
MAMCD-Maryland Association for Multicultural Counselor and Development
MCDA-Maryland Career Development Association
MCSJ-Maryland Counselors for Social Justice
MAMCFC-Maryland Association for Marriage, Couples and Family Counseling
SAIGEMD-Maryland Society for Sexual, Affectional, Intersex, and Gender Expansive Identities

MSCA Liaison	LCPC-M Liaison	MAMHC Liaison
-----------------	-------------------	------------------

****MSCA**-Maryland School Counselor Association
 ****LCPC-M**-Licensed Clinical Professional Counselors of Maryland
 ****MAMHC**-Maryland Association of Mental Health Counselors
 **These organizations are not active divisions, but we have liaisons with each.

Why should you join MCA?

Membership is important to your professional growth and career development. It provides:

- Continuing education opportunities at discount prices
- Early notification of MCA and all division events
- Current public policy issues and new laws of interest to professional counselors
- Grant opportunities
- Support and advocacy for professional counseling in the state of Maryland
- Leadership training and greatly reduced registration costs to annual, regional or national conferences for board members
- Electronic reminders to renew your membership
- A list of events that you have participated in



[Click here](#) to join MCA today!

Not ready to join? Choose the non-Member contact option for a no-cost way to add your name to our email list.

Newsletter Submissions

Advertisements can be submitted by members and nonmembers for inclusion in the newsletter. Ads will be copied into the newsletter as submitted, including active links and images. Editing by Newsletter Team will only be resizing to requested space.

Articles relevant to the organization or profession may be submitted for inclusion in the newsletter. Submissions may be from members and nonmembers. Please note that promotions and endorsements **are not** considered articles; they must be submitted as paid advertisements.

Announcements may be submitted for inclusion by MCA committees, divisions and affiliates. This can include upcoming events, important news, etc.

How much do ads cost?

Pricing is based on size of the ad per page. A quarter page is \$25, a half page is \$50 and a full page is \$75. For example, if your ad is 2 full pages, your total will be \$150.

What forms of payment do you accept?

We accept payments via check and credit card. Checks must be mailed to PO Box 1971 Clinton MD 20735 % MCA Treasurer. Please note "Newsletter Ad" in the memo. For paying by credit card, please purchase ad space via the new [MCA store](#).

How often is there a newsletter release?

Newsletters are released quarterly. When released, it is emailed to subscribers and posted to MCA's website at: <http://www.md counseling.org/page-1596008>.

When is the next newsletter deadline?

<i>Edition</i>	<i>Submission Deadline</i>	<i>Publication Month</i>
Summer	July 15 th	August
Fall	October 15 th	November
Winter	January 15 th	February
Spring	April 15 th	May

Can I post my ad or event on the MCA website?

Yes, contact MCA's Virtual Assistant at Website@MDCounseling.org.

Can I submit events to the weekly digest?

Yes, contact the Public Relations Committee at Public.Relations@MDCounseling.org.